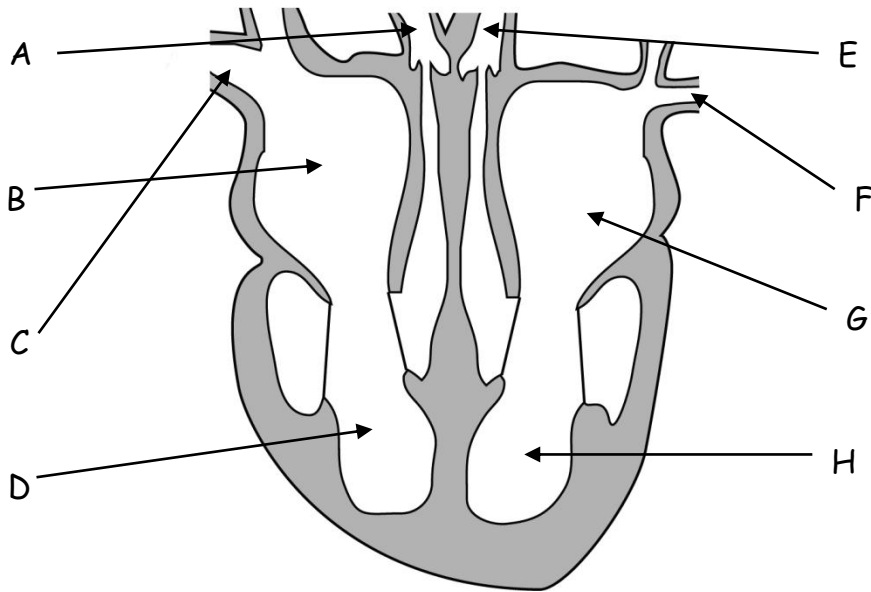


National 5 Biology

Animal Transport Systems

1. The following diagram shows the human heart. Name A-H.



2. Name three functions of the blood.

(8)

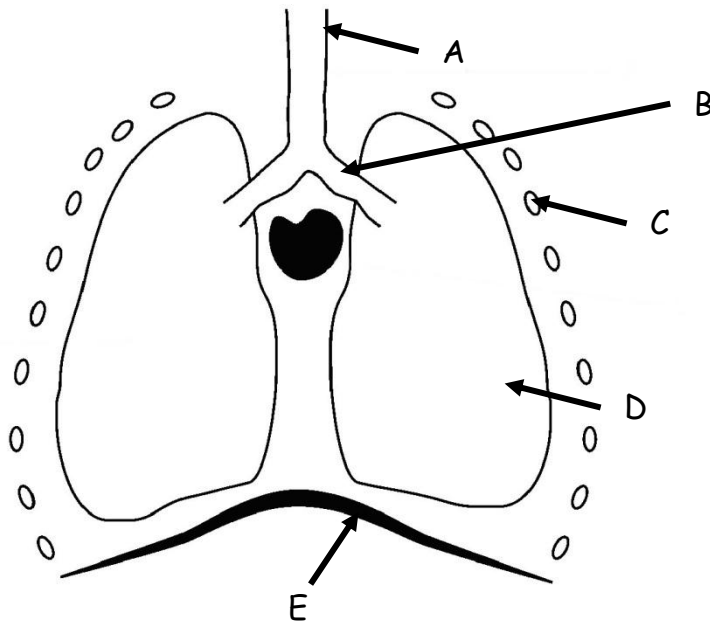
3. Starting in the left ventricle, describe the flow of blood around the body including the chambers of the heart, the major blood vessels and any organs.

(3)

(5)

Tobermory High School

4. The following diagram shows a section through the human chest.



(a) Name parts A-E.

(5)

(b) Describe three features which make the lungs efficient organs of gas exchange.

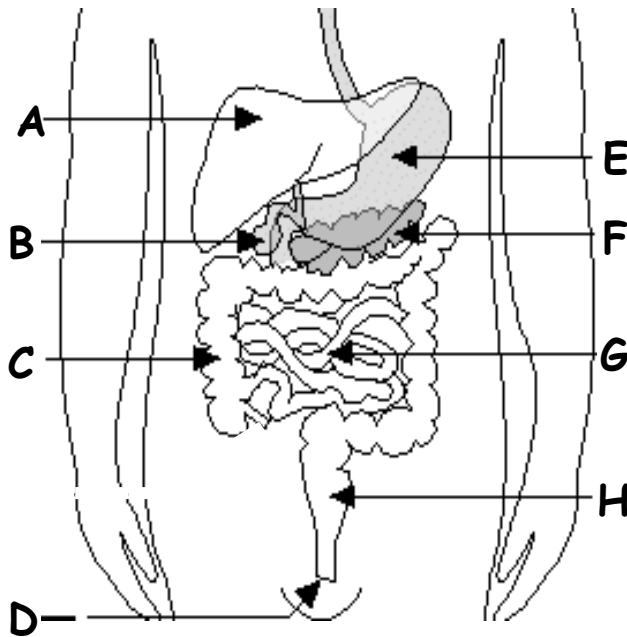
(3)

(c) Explain the function of the cilia and mucus in the trachea and bronchi.

(2)

Tobermory High School

5. The following diagram shows the human digestive system.



- (a) Identify A-H. (8)
- (b) Explain the mechanism of peristalsis. (2)
- (c) The function of the small intestine is to absorb food. Give 4 adaptations which make it suitable for this. (4)

Total - 40